

# Central Motor Drive System

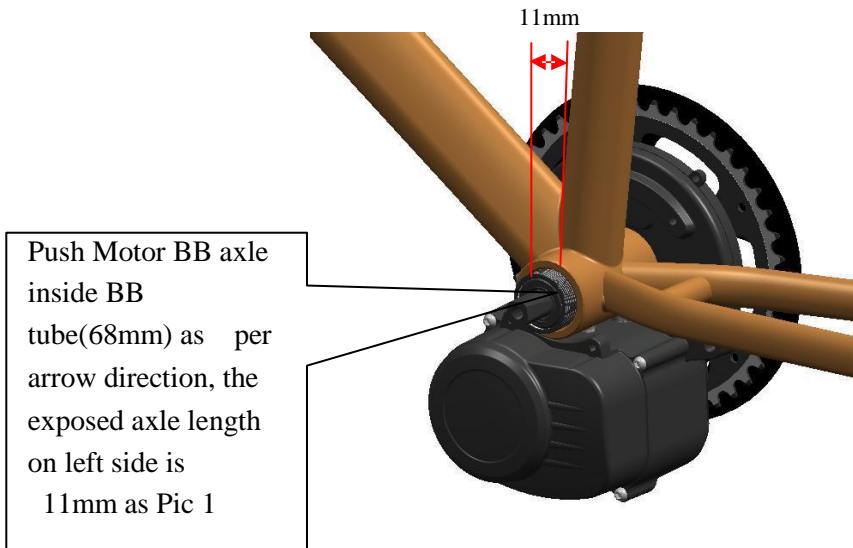
## Install Manual



## Motor Installation Process

### 1 (1.Install motor)

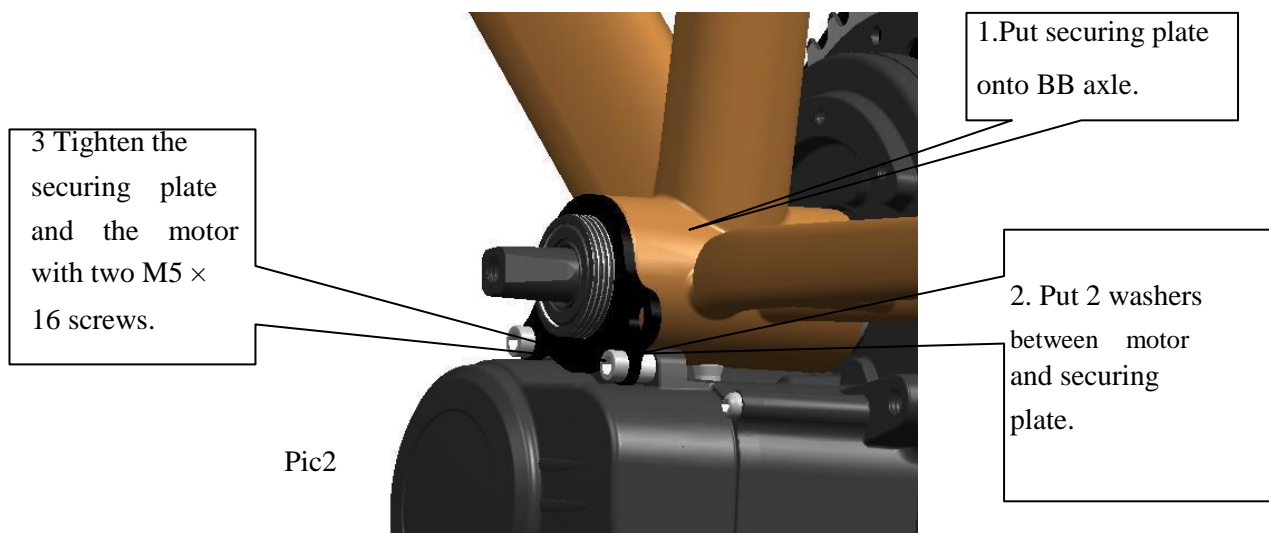
**Step 1.1.** Push Motor BB axle inside BB tube(68mm) as per picture below, the exposed axle length on the left side is 11mm as Pic 1



Pic1

**Step 1.2.** Install Securing plate. Please refer to Pic2.

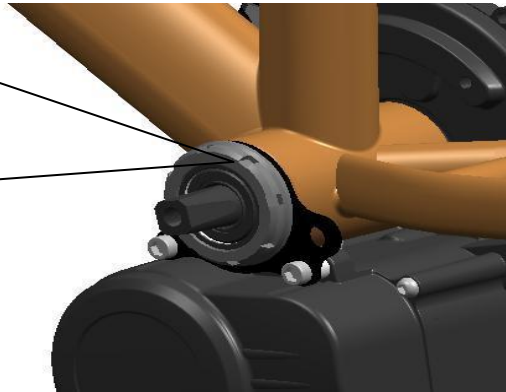
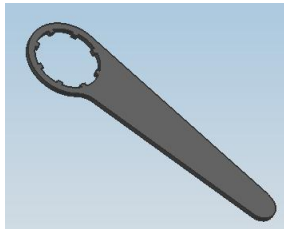
1. Put securing plate onto BB axle.
2. Put 2 washers between motor and securing plate.
3. Tighten the securing plate and the motor with two M5×16screws.



Pic2

**Step 1.3.** Screw the M33.5 nut onto the BB axle, using an affiliated wrench by 40N·m torque. Please refer to Pic3.

Screw the M33.5 nut onto the BB axle, using the provided wrench by 40Nm torque.

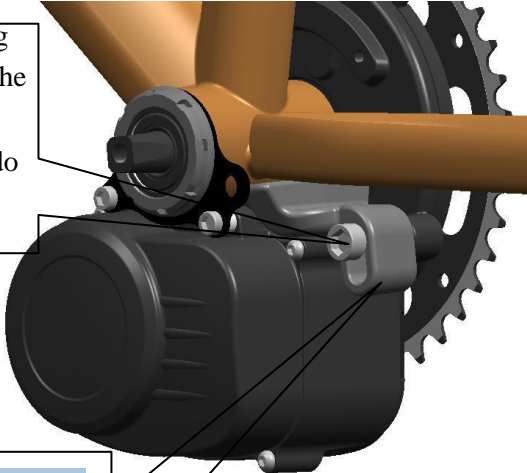


Pic3

**Step 1.4.** Fix the main body of the Motor onto bike-Frame. Please refer to Pic4.

1. Install the fixing block onto the motor with M8\*40 bolt, do not tighten.
2. Using a M8 \* 45 bolt and the hang-plate to tighten the fixing block and motor.

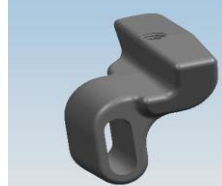
Install the fixing block onto the motor with M8\*40 bolt, do not tighten.



Using a M8 \* 45 bolt and the hang-plate to tighten the fixing block and motor.

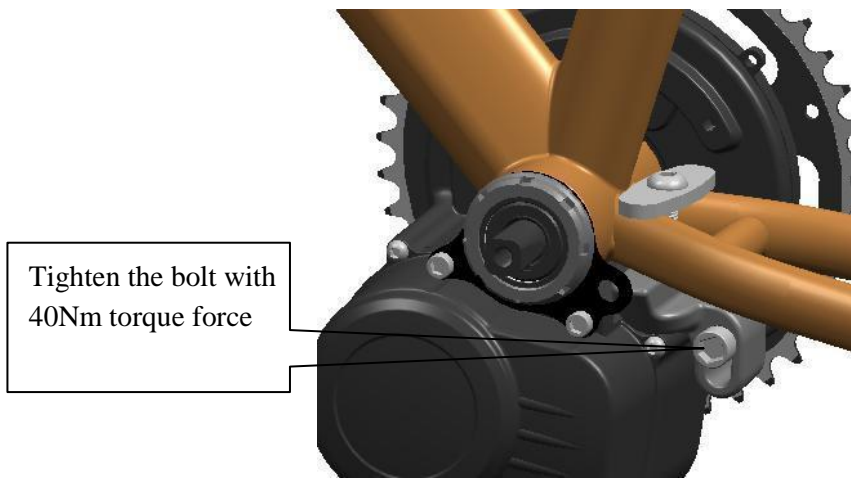


Pic4



Fixing block)

**Step 1.5.** Tighten the bolt with 40N.m torque force. Please refer to Pic5.

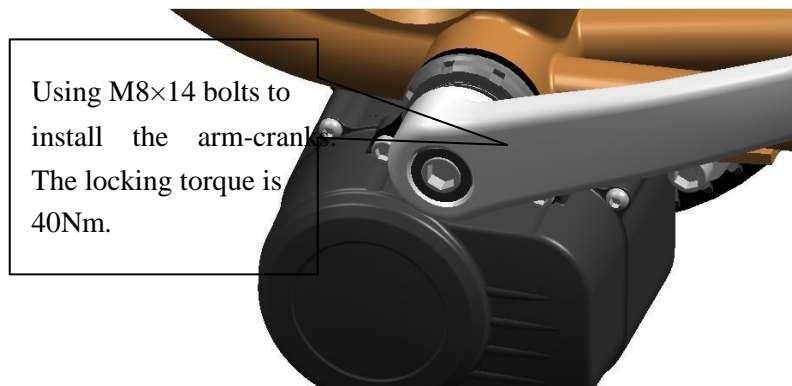


Pic5

### Step 1.6. Install arm-cranks.

Using M8×14 bolts to install the arm-cranks. The locking torque is 40N.m.

Right hand arm-crank has left turn thred on the pedals, left hand arm-crank has normal right turn thred

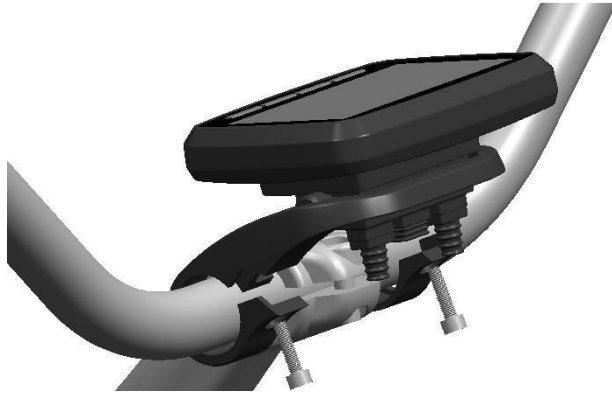


Pic6

## 2 Display Installation Process

### Step 2.1.

- Install VLCD5 display. Please refer to Pic7.
- Install the LCD display onto the handlebar using 2pcs of M4×14 bolts and 2pcs of M4 nuts
- The bracket is 32 with adjust rings for different handlebar sizes.



Pic7

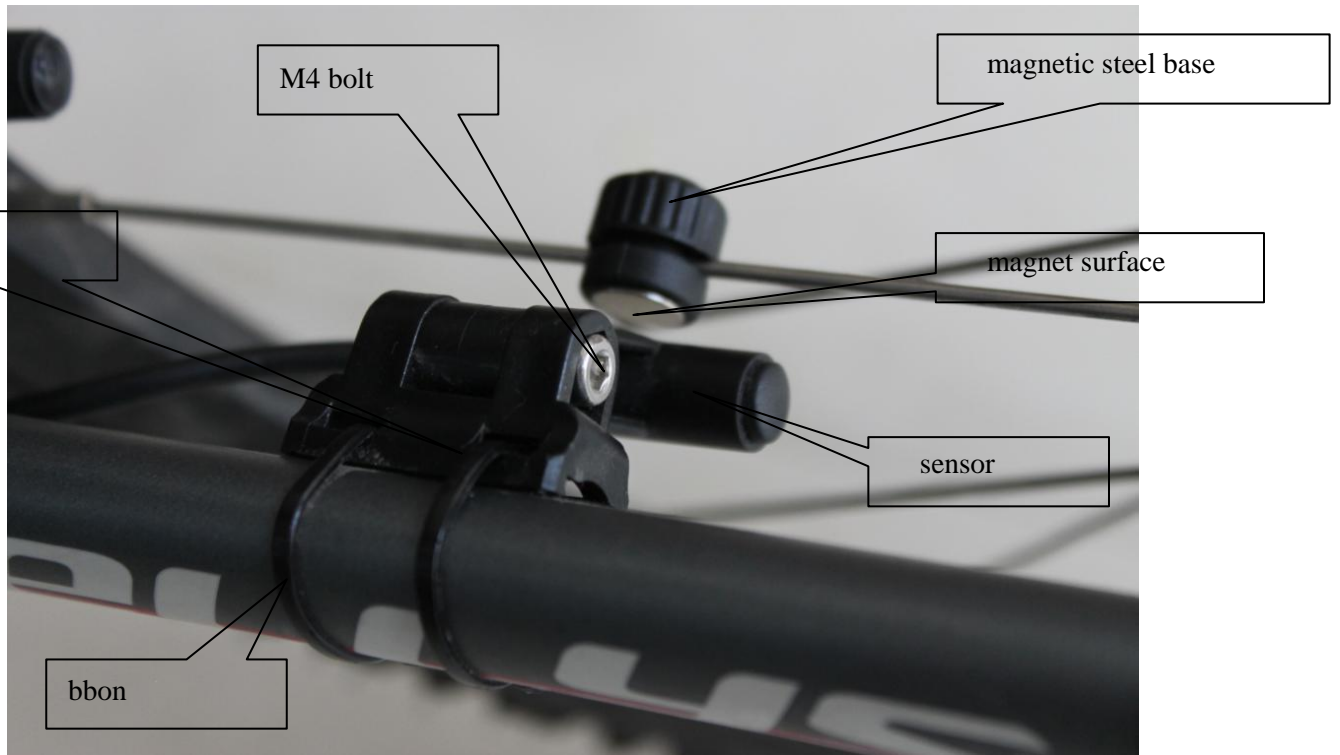
Step 2.2. Install left hand remote control buttons. Please refer to Pic8.



Pic8

### 3 Detective sensor Installation

Install the detective sensor onto the bike rear fork with two ribbons as shown below



Pic9

- install the magnet steal onto the rear fork, facing the detective sensor
- Adjust the distance between sensor and magnet steal
- The distance between the sensor and the magnet steal should below 5mm.( $< 5\text{mm}$ )
- Tighten the M4 bolt.

#### 4 System connection

Step 4.1.: connect the display and operation button.



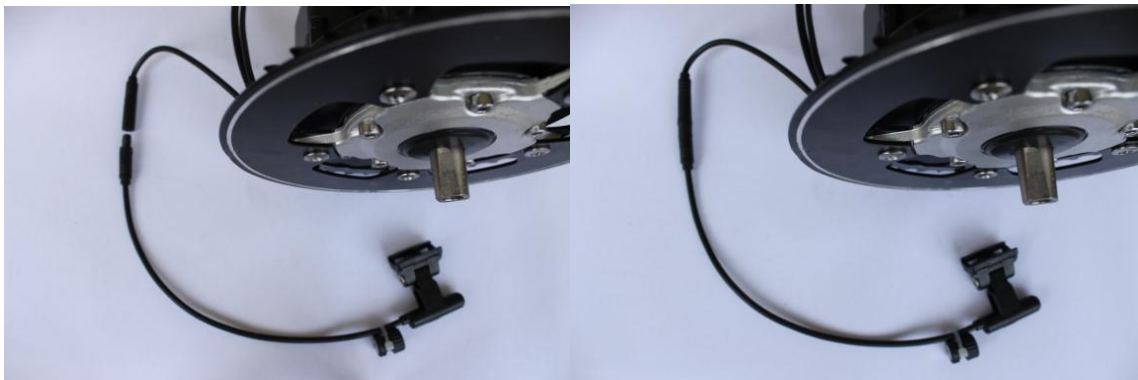
Step 4.2: insert the brake-levers plugs into the display. The brake-levers are optional.



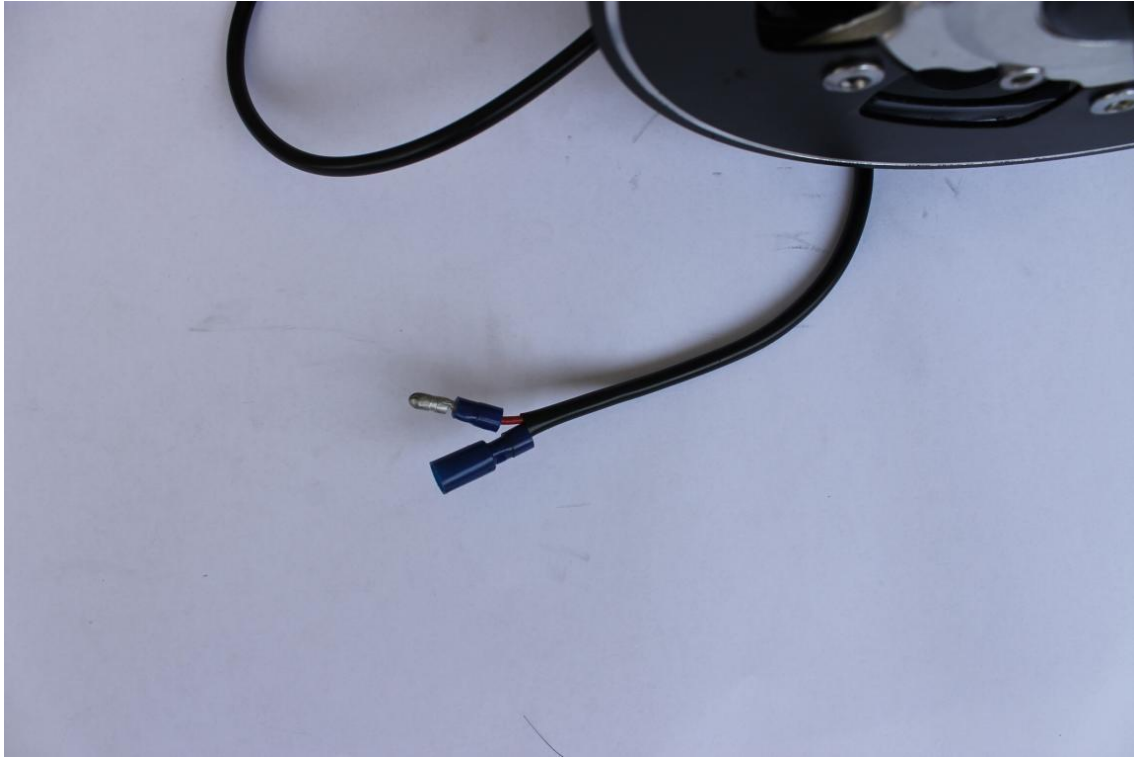
Step 4.3: connect the main motor and the display



Step 4.4: connect the main motor and the detective sensor



Step 4.5: connect the motor and the battery





## System connection

